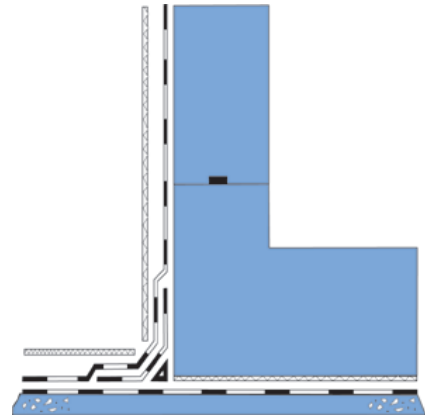


Description

Bitusheet - SBS Protection Board is a tough, polyester reinforced, flexible bitumen modified board. Developed to protect the range of Bitusheet self adhesive waterproofing membrane and other types of waterproofing membranes against damage by abrasive backfill materials and poured concrete.

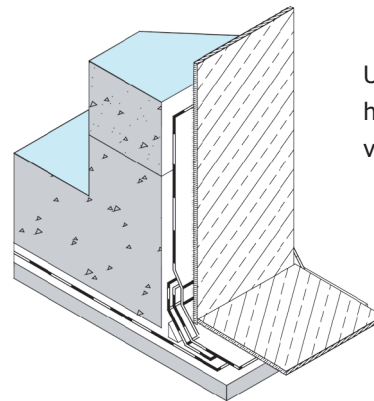
Bitusheet - SBS Protection Board



Application

Bitusheet double sided tape or SCP adhesive should be used to fix the protection board to the membrane. Lap joints should be staggered as well as staggered over the membrane laps. Use SCP reinforced XL tape or ordinary shuttering tape depending upon the site traffic.

- Weather, warp and rot proof
- Excellent flexibility
- High puncture resistance
- Excellent resistance to chemicals
- Compatible with most waterproofing systems



Used in both horizontal and vertical protection



Physical Properties	Value	Value
Standard thickness (mm)	3.0	6.0
Standard sheet size	2000 x 1000	2000 x 1000
Nominal weight (kg/m ²)	4.00	8.00
Nominal board weight (kg)	8.00	16.00
Sheets per pallet	200	100
Bitumen content	>75%	>75%
Flexibility at 25°C	Pass	Pass
Softening point	140°C	140°C
Heat resistant at 80°C	No flow	No flow
Water permeability	Impermeable	Impermeable