

Walldrain

Description

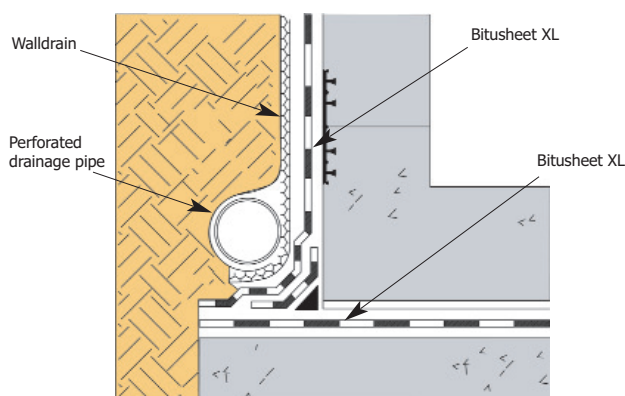
Walldrain consists of a preformed lightweight plastic core bonded to a geotextile filter. The filter was specially developed to permit free entry of water, but not soil, and so prevent soil particles from clogging the drainage system. Walldrain is designed to be placed with the geotextile filter layer facing the direction of water seepage or backfill. Walldrain can be applied against waterproofing membranes or directly against the masonry/concrete substrate.

Uses

Walldrain relieves hydrostatic pressure against the vertical walls of buried structures - basements, retaining walls, reservoirs, tunnels, bridge abutments, culverts and underground car parks. Walldrain provides a second line of defence to channel seepage water away from the structure and is designed to fully comply with the requirement of type 'C' design BS 8102.

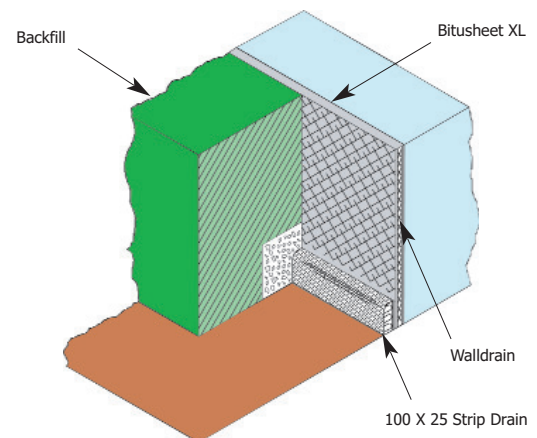
Wall Drain Roll Size

12m - 1m x 50m
25mm - 0.9m x 50m



Strip Drain Roll Size

Section 25mm x 125mm
Roll length 50m



Core Thickness	12mm	25mm
In plane water flow (HG = 1.0)	41/s/m	16/l/s/m
In plane water flow (HG = 0.01)	0.26l/s/m	0.54/l/s/m
Compressive Force at 20% compression	250KN/m ²	200Kn/m ²
HDPE Thickness	1.0mm	1.0mm

SCP CONCRETE SEALING TECHNOLOGY LTD

Crowbush Farm Business Park, Luton Road, Toddington, Beds LU5 6HU United Kingdom

Telephone: +44(0)1525 872700.

Facsimile: +44(0) 1525 871019

Email: info@scpwaterproofing.com

Web: scpwaterproofing.com